



Republic of the Philippines
Department of Education
National Capital Region
DIVISION OF CITY SCHOOLS – MANILA
Manila Education Center Arroceros Forest Park
Antonio J. Villegas St. Ermita, Manila



SCIENCE 1

OUR HOME



Quarter 4: SLeM Week 1

Learning Competency:
Infers that the outer part of the earth is the place where we live.

GOVERNMENT PROPERTY
NOT FOR SALE

HOW TO USE THIS MODULE

Before you start answering the module, I want you to set aside other **tasks** that will disturb you while enjoying the lessons. Read the simple instructions below to successfully enjoy the objectives of this kit. *Have fun!*

1. Follow carefully all the contents and instructions indicated in every page of this module.
2. *Write on your notebook or any writing pad the concepts about the lessons. **Writing enhances learning**, that is important to develop and keep in mind.*
3. Perform all the provided activities in the module.
4. Let your facilitator/guardian assess your answers.
5. Analyze conceptually the posttest and apply what you have learned.
6. Enjoy studying!

PARTS OF THE MODULE

- **Expectations** - These are what you will be able to know after completing the lessons in the module.
- **Pre-test** - This will measure your prior knowledge and the concepts to be mastered throughout the lesson.
- **Looking Back** - This section will measure what learnings and skills that you understand from the previous lesson.
- **Brief Introduction** - This section will give you an overview of the lesson.
- **Activities** - These are activities designed to develop critical thinking and other competencies. This can be done with or without a partner depending on the nature of the activity.
- **Remember** - This section summarizes the concepts and applications of the lessons.
- **Checking your Understanding** - It will verify how you learned from the lesson.
- **Post-test** - This will measure how much you have learned from the entire module

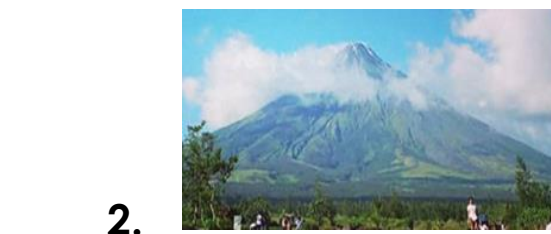
EXPECTATION

1. **Infers that the outer part of the earth is the place where we live.**
2. **Describe the earth.**
3. **Identify the landforms and waterforms.**

PRE-TEST

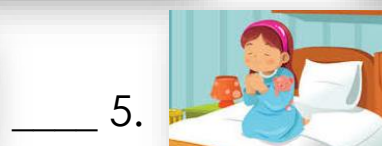
Directions: Look at the pictures below. Name the landforms and waterforms. Choose the letter of the correct answer from the box below.

A. Mountain	B. Volcano	C. plain
D. Ocean	E. pond	F. Falls



LOOKING BACK TO YOUR LESSON

Directions: Write **L** in the blank for a loud sound, **S** for a soft sound.



BRIEF INTRODUCTION

The earth is the third planet in the solar system. It moves around the sun. Earth is made up of land, water, and air. It is the only planet that support life. It is the place where we live. Plants and animals live with us on earth. There are also nonliving things in it.

What do you know about the earth?

Lesson 1

The Earth, Our Home



<https://www.google.com/search?q=image+clip+art+EARTH>

Look at a globe. A globe is a model of the earth. It shows all the land and water on Earth.



Photo Credit: LTJG CARLO VICTOR D MANASAN PN

The blue parts are the earth's bodies of water, while the green parts are the earth's land forms.

Only about one fourth of the earth's surface is land and the rest is water.

There are different landforms and waterforms on earth. Do you know some?

The Landforms:

The earth has different landforms. There are highlands and lowlands.



Photo Credit: Mel Alonso

- **Plain** is a wide flatland. It is where most people live. We can plant and take care animals here. The **National Capital Region** where **Manila** can be found is wide flatland.



Photo Credit: Reiner Dollison

- **Volcano** is a highland with an opening or crater on its top. **Mayon Volcano** in **Albay, Bicol** is famous for its perfect cone shape.



Photo Credit: Josephine Tardio & Eliza Lopez

- **Mountain** is a highland. It is covered with big trees and more plants. Some form a mountain range. **Sierra Madre** is the famous mountain range. **Mt. Apo** in **Davao** is the highest mountain in the country.



Photo Credit: Laarni Castro Nafuran



- **Valley** is a flatland between two highlands or mountains. **Cagayan Valley** is famous for having a fertile land that grows good fruits and vegetables.

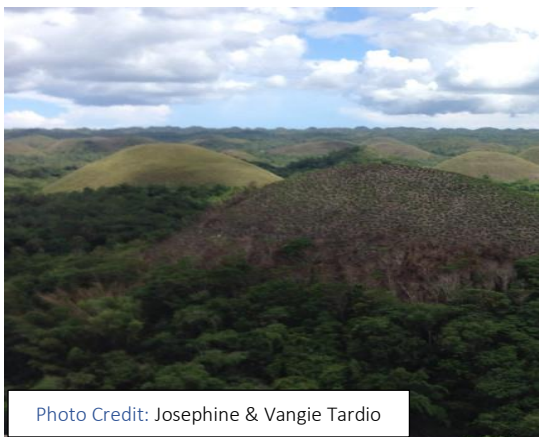


Photo Credit: Josephine & Vangie Tardio



- **Hills** are highlands lower than a mountain. The famous **Chocolate Hills** in **Bohol** looks like chocolate during

summer and green during rainy days.



- **Plateau** is a flatland on top of a highland or a mountain. **Baguio City** is famous Summer Capital of the Philippines. It is on top of a mountain. People love to visit the place during summer because of its cold temperature and beautiful scenery.

The Waterforms:

The earth also has different waterforms. Some waterforms can be fresh water, others are salty water.



- **Ocean** is the biggest body of salt water. The **Pacific Ocean** is on the East part of the **Philippines**. Big boats going to Samar and Leyte pass through this part of the ocean.

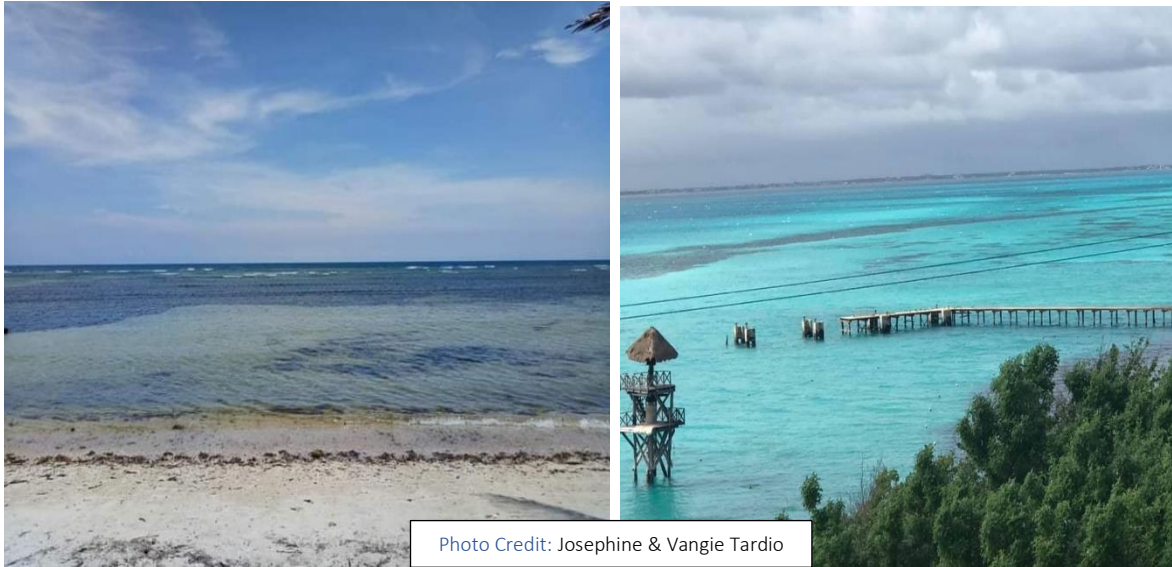


Photo Credit: Josephine & Vangie Tardio

- **Sea** is a big body of salt water. The Philippines is surrounded with South China Sea on the west and north and the Celebes Sea on the south. Some famous beaches and resorts in the country are part of the sea.



Photo Credit: Mel Alonso

- **Lake** is the biggest body of fresh water surrounded by land. The famous is the **Taal Lake** in **Taal, Batangas** which can be seen in **Tagaytay City**.

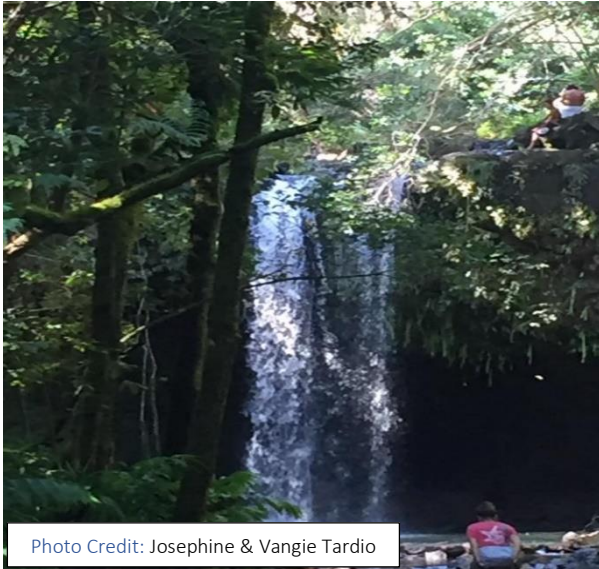


Photo Credit: Josephine & Vangie Tardio

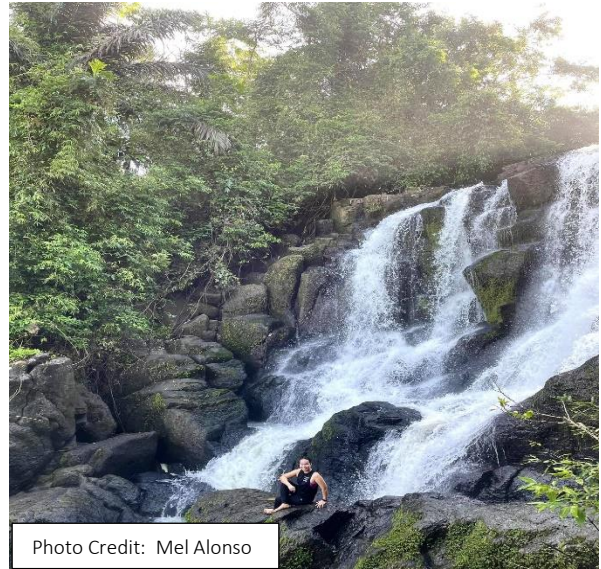


Photo Credit: Mel Alonso

- **Waterfalls** is a body of fresh water flowing from highlands towards the lowlands. **Pagsanjan Falls** in **Laguna** is one of the famous tourist attractions in the country.

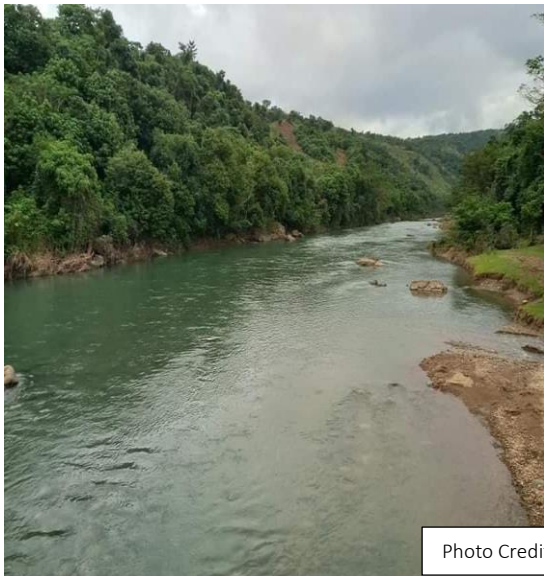
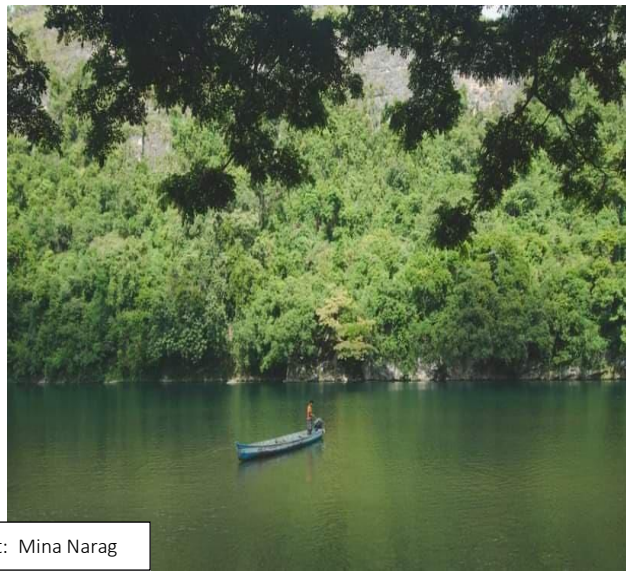


Photo Credit: Mina Narag



- **River** is a flowing body of fresh water. The famous **Cagayan River** which is known to be the longest and the largest river in the country.



- **Pond** is a body of fresh water smaller than the lake. Most ponds are used to raise fishes like tilapia and milkfish (bangus).

We must protect and take care of our planet. It is the only place where we can live. It is our **HOME**. Plant more and do not destroy its beauty. Plants and animals can live both on land and in water. They can live with us. Living things and nonliving things have their role on earth.

ACTIVITY 1

I. Objective: Identify the parts of the earth.

II. Title: The Earth Where We Live

III. Problem: What are the parts of the earth?

IV. What to use: colors

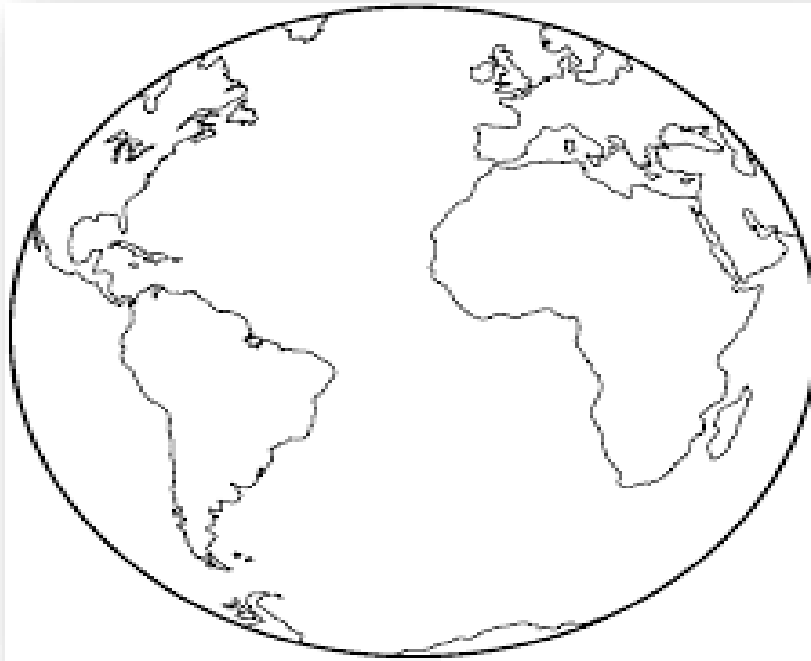
V. What to do: (Ask parents or an elder to assist you)

Color the parts of the earth.

Make different landforms and waterforms.

Land: green, brown

Water: blue



<http://clipart-library.com/free/earth-clip-art-black-and-white.html>

VI. Critical Thinking Questions

1. What are the different landforms?

2. What are the different waterforms?

3. How do you see the earth when you grow?

REMEMBER

- The globe represents the earth.
- It is the place where we live.
- It is made up of land, water, and air.
- The earth has all the things needed by living things in order to live.
- The earth is our home.
- We must protect and take care of the place

CHECKING YOUR UNDERSTANDING

Direction: Write **TRUE** if the statement is correct and **FALSE** if not.

- _____ 1. The earth is the only place to live.
- _____ 2. The earth is made of different waterforms only.
- _____ 3. Man can live in water.
- _____ 4. Some waterforms are made of salt water and fresh water.
- _____ 5. Man, animals, and plants can live on different landforms.

POST TEST

Directions: Match the picture to its name. Select only the letter of the correct answer.

A

1.



2.



3.



4.



5.



B

A. falls

B. lake

C. ocean

D. volcano

E. plain

F. pond



Name: _____

Parts of the Earth
Reflective Learning Sheet

Directions: Write a reflective learning on the different parts of the earth by answering the questions inside the box. You can express your answers in a more critical and creative presentation. You can do it! Wishing you SUCCESS!

I want to explain how ...

To begin with....

Finally,

ANSWER SHEET

Name: _____ Section _____

PRE-TEST

- 1.
- 2.
- 3.
- 4.
- 5.

LOOKING BACK TO YOUR LESSON

- 1.
- 2.
- 3.
- 4.
- 5.

Activity:

Color the parts of the earth.

Make different landforms and waterforms.

CRITICAL THINKING

- 1.
- 2.
- 3.

CHECKING YOUR UNDERSTANDING

- 1.
- 2.
- 3.
- 4.
- 5.

POST TEST

- 1.
- 2.
- 3.
- 4.
- 5.

ANSWER KEY

Name: _____ Section _____

PRE-TEST

1. **F**
2. **B**
3. **C**
4. **E**
5. **D**

LOOKING BACK TO YOUR LESSON

1. **L**
2. **S**
3. **L**
4. **L**
5. **S**

ACTIVITY 1



CRITICAL THINKING:

1. The different landforms are
Plain, volcano, mountain,
Valley and plateau.
2. The different waterforms are
Ocean, river, sea, lake, pond
And waterfalls
3. I want to see the beautiful landforms
and waterforms.

CHECKING YOUR UNDERSTANDING

1. **TRUE**
2. **FALSE**
3. **FALSE**
4. **TRUE**
5. **TRUE**

POST TEST

1. **C**
2. **D**
3. **A**
4. **F**
5. **E**

REFERENCES

- Carodan, C. P., et al (1998). *Lesson Plan in Science*. Quezon City: Dane Publishing House, Inc.
- Coronel, C. C. (1997). *Science and Health Textbook in Grade one*. Manila, Quezon: SD Publication
- Sing, L. B., et al (2018). *Elementary Science Explorer 1 Second Edition*, Quezon City: JFC Publishing House, Inc.

Art resources

https://www.google.com/url?sa=i&url=https%3A%2F%2Fwww.clipartkey.com%2Fsearch%2Fearth%2F&psig=AOvVaw3JB2GvTQnOBLE-6z6L9Csw&ust=1621505230040000&source=images&cd=vfe&ved=0CAMQjB1qFwoTCOja4fy_1fACFQAAAAAdAAAAABAE
<http://clipart-library.com/free/earth-clip-art-black-and-white.html>

https://www.google.com/url?sa=i&url=https%3A%2F%2Fwww.dreamstime.com%2Fillustration%2Fgarden-animal.html&psig=AOvVaw31-iGbyU66y0ECaI_uh_Rp&ust=1621508993654000&source=images&cd=vfe&ved=0CAMQjB1qFwoTCiID2P7N1fACFQAAAAAdAAAAABAI

Management and Development Team

Schools Division Superintendent: Maria Magdalena M. Lim, CESO V

Chief Education Supervisor: Aida H. Rondilla

CID Education Program Supervisor:

CID LR Supervisor:

CID-LRMS Librarian II: Lady Hannah C Gillo

CID-LRMS PDO II: Albert James P. Macaraeg

Editor/s: ELIZA A. LOPEZ & REBECCA M. ROXAS

Writer/s: LUZ VANESSA S. ALLOSO