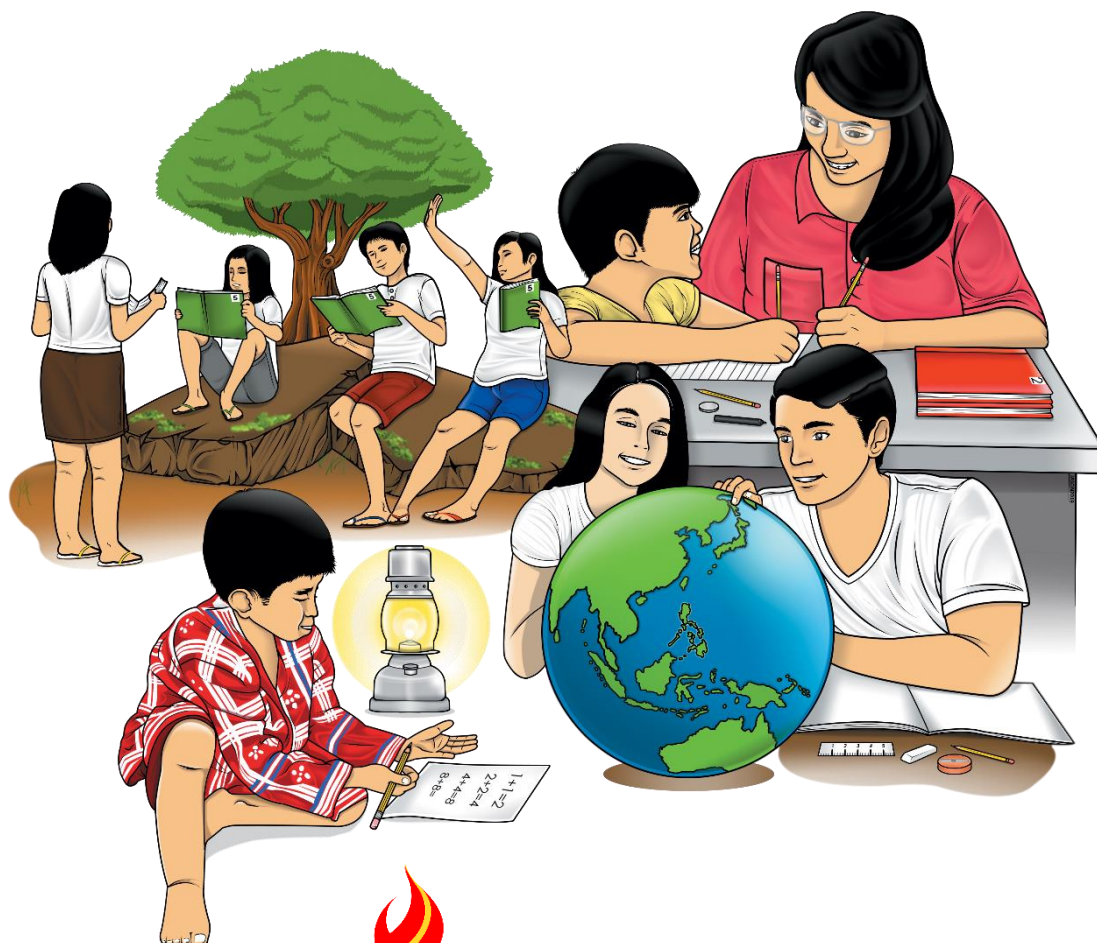


# Science

## Quarter 2 – Module 6

### Parts of a Plant



**Science – Grade 3**  
**Alternative Delivery Mode**  
**Quarter 2 – Module 6: Parts of a Plant**  
**First Edition, 2020**

**Republic Act 8293, section 176** states that: No copyright shall subsist in any work of the Government of the Philippines. However, prior approval of the government agency or office wherein the work is created shall be necessary for exploitation of such work for profit. Such agency or office may, among other things, impose as a condition the payment of royalties.

Borrowed materials (i.e., songs, stories, poems, pictures, photos, brand names, trademarks, etc.) included in this module are owned by their respective copyright holders. Every effort has been exerted to locate and seek permission to use these materials from their respective copyright owners. The publisher and authors do not represent nor claim ownership over them.

Published by the Department of Education  
Secretary: Leonor Magtolis Briones  
Undersecretary: Diosdado M. San Antonio

**Development Team of the Module**

**Writer:** Jennifer Batalon Escabosa

**Editors:** Armando S. Vinoya, Arlyn B. Lim, Ph.D.

**Reviewers:** Dinah G. Oani, Emily A. Paller, Bryan Ephraem E. Miguel,  
Neil Edward D. Diaz

**Illustrator:** Nelson B. Dizor

**Layout Artist:** Bryan Ephraem E. Miguel

<b>Management Team:</b> Allan G. Farnazo	Eufemia T. Gamutin
Mary Jeanne B. Aldeguer	Josie T. Bolofer
Analiza C. Almazan	Arlyn B. Lim
Ma. Cielo D. Estrada	Secinia C. Morales
Maria Liza I. Berandoy	

**Printed in the Philippines by** \_\_\_\_\_

**Department of Education – Region XI**

Office Address: F. Torres St., Davao City  
Telefax: (082) 291-1665; (082) 221-6147  
E-mail Address: region11@deped.gov.ph \* lrms.regionxi@deped.gov.ph

# Science

## Quarter 2 – Module 6:

### Parts of a Plant

## **Introductory Message**

This Self-Learning Module (SLM) is prepared so that you, our dear learners, can continue your studies and learn while at home. Activities, questions, directions, exercises, and discussions are carefully stated for you to understand each lesson.

Each SLM is composed of different parts. Each part shall guide you step-by-step as you discover and understand the lesson prepared for you.

Pre-tests are provided to measure your prior knowledge on lessons in each SLM. This will tell you if you need to proceed on completing this module or if you need to ask your facilitator or your teacher's assistance for better understanding of the lesson. At the end of each module, you need to answer the post-test to self-check your learning. Answer keys are provided for each activity and test. We trust that you will be honest in using these.

In addition to the material in the main text, Notes to the Teacher are also provided to our facilitators and parents for strategies and reminders on how they can best help you on your home-based learning.

Please use this module with care. Do not put unnecessary marks on any part of this SLM. Use a separate sheet of paper in answering the exercises and tests. And read the instructions carefully before performing each task.

If you have any questions in using this SLM or any difficulty in answering the tasks in this module, do not hesitate to consult your teacher or facilitator.

Thank you.



## *What I Need to Know*

This module was designed and written with you in mind. It is here to help you master the parts of a plant. The scope of this module permits it to be used in many different learning situations. The language used recognizes the diverse vocabulary level of students. The lessons are arranged to follow the standard sequence of the course. But the order in which you read them can be changed to correspond with the textbook you are now using.

The module has only one lesson but packed with different activities that a learner can explore and have fun while learning.

After going through this module, you are expected to name the parts of the different kinds of plants (**S3LT-IIe-f-9**).



## ***What I Know***

*(If you got a 100% score, you may skip the module but if only got 50% to 99%, you will proceed with the module.)*

Direction: Read and understand the questions. Write the correct letter in your notebook.

1. Which part of the plant grows downward into the ground?  
A. flowers      B. leaves      C. stems      D. roots
2. What part of the plant keeps it in upright position?  
A. flowers      B. leaves      C. stems      D. roots
3. What is the reproductive organ of most plants and considered the most attractive and colorful part?  
A. flowers      B. leaves      C. stems      D. roots
4. What is the ripened ovary of a flower?  
A. flowers      B. fruits      C. leaves      D. trunk
5. What part of the plant contains the chlorophyll, a pigment used in making food?  
A. flowers      B. fruits      C. leaves      D. trunk

## Lesson

# 1

## Parts of the Different Kinds of Plant



### *What's In*

Plants are living things. There are many different kinds of plants around us but before knowing them, we must learn first what the parts of the different kinds of plants are.

The part of the different kinds of plants are roots, stem, leaves, flower, and fruits. The root is the plant part that grows downward into the ground, but it can also be found below the ground, or both. The stem holds the plant up. The leaf is the plant part that grows from the stem. From flower it will develop into a fruit. The fruit is the product of fertilization of a plant.



### **Notes to the Teacher**

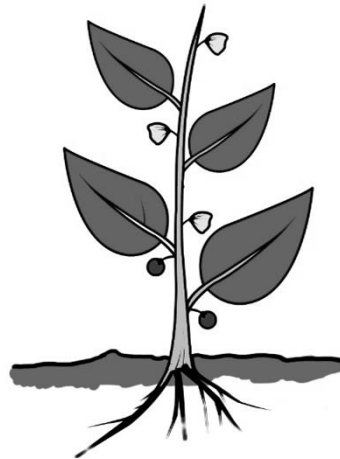
Teacher who will make use of the material is expected to inject other activities which she/he thinks are more appropriate and suited to their learners' needs and environment.

Varied activities are materialized to reinforce learning skills of our young children with the assistance of the teacher.



## *What's New*

Direction: Read this short story and answer the given question.  
Write your answer in the box provided.



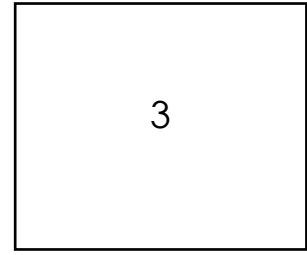
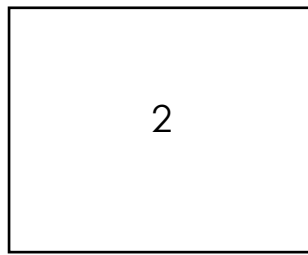
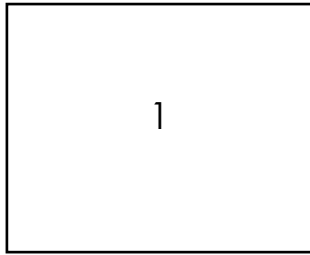
### **A Short Story About Plants**

Long time ago, a farmer took a big bag of seeds to sell at the market. Suddenly, his cart's wheel hit a big stone. Bump! One of the seeds fell out of the bag and into the hot, dry ground. 'I'm scared!' said the seed. 'I need to be safe under the soil.' Just then, a buffalo walked on the seed and pushed it into the ground. 'I'm thirsty!' said the seed. 'I need some water to help me grow.' Just then, it started to rain. The next morning the seed had a little green shoot.

All day, it sat in the sun and grew taller and taller. The next day it had its first leaf. This helped it to catch sunlight and grow. That evening, a hungry bird tried to eat it, but the seed had roots to help it stay in the ground. Many years of sunshine and rain passed. The seed became a plant and then the plant became a tree. Today, if you visit the countryside you can see the tree. It is big and strong and now makes seeds of its own.

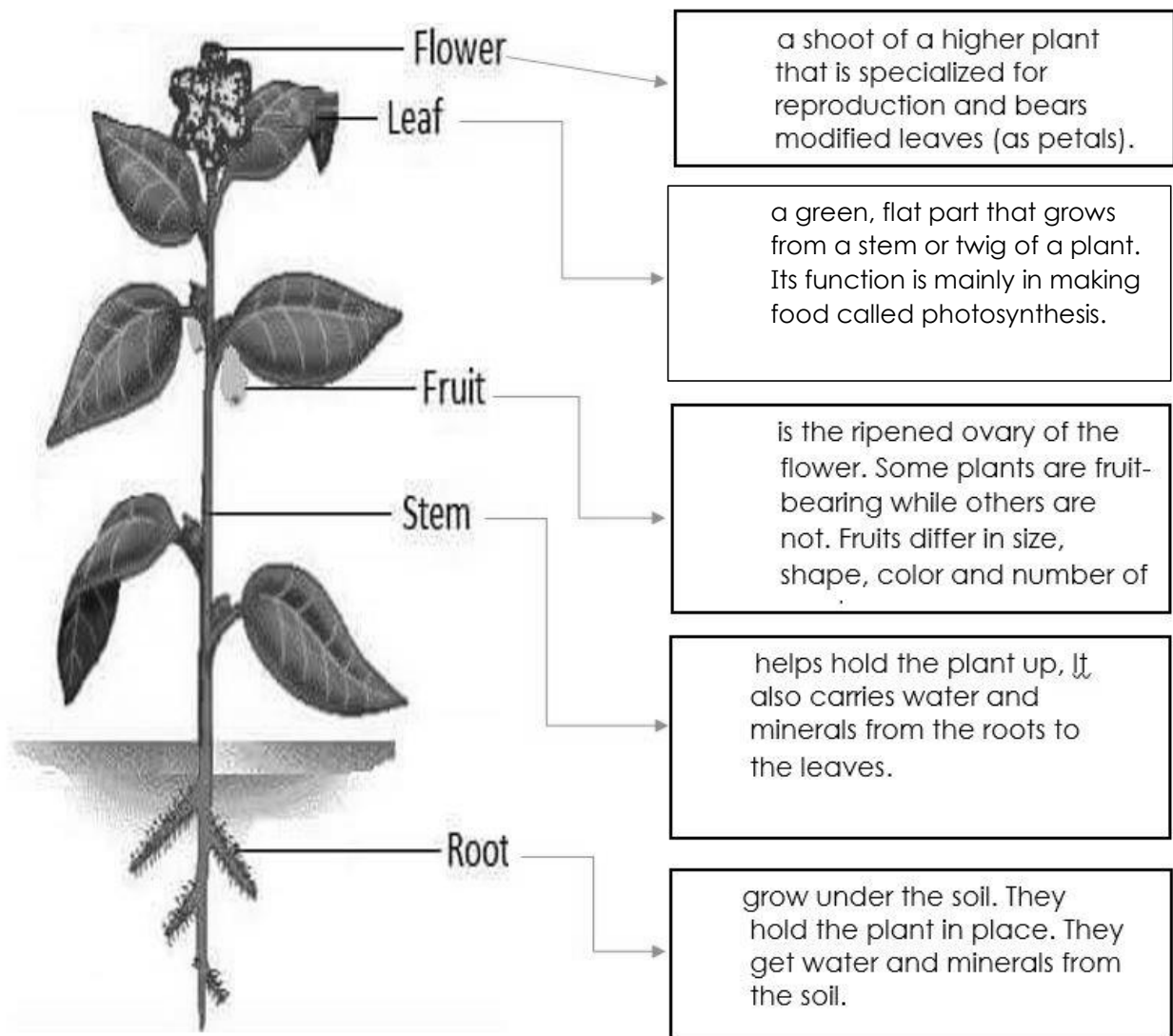
Write in the box the parts of the plant mentioned in the story.

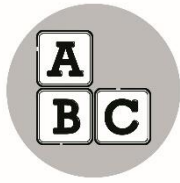




## *What is It*

### Parts of a Plant and Its Function





## What's More

### Activity 1.1 Finding Words

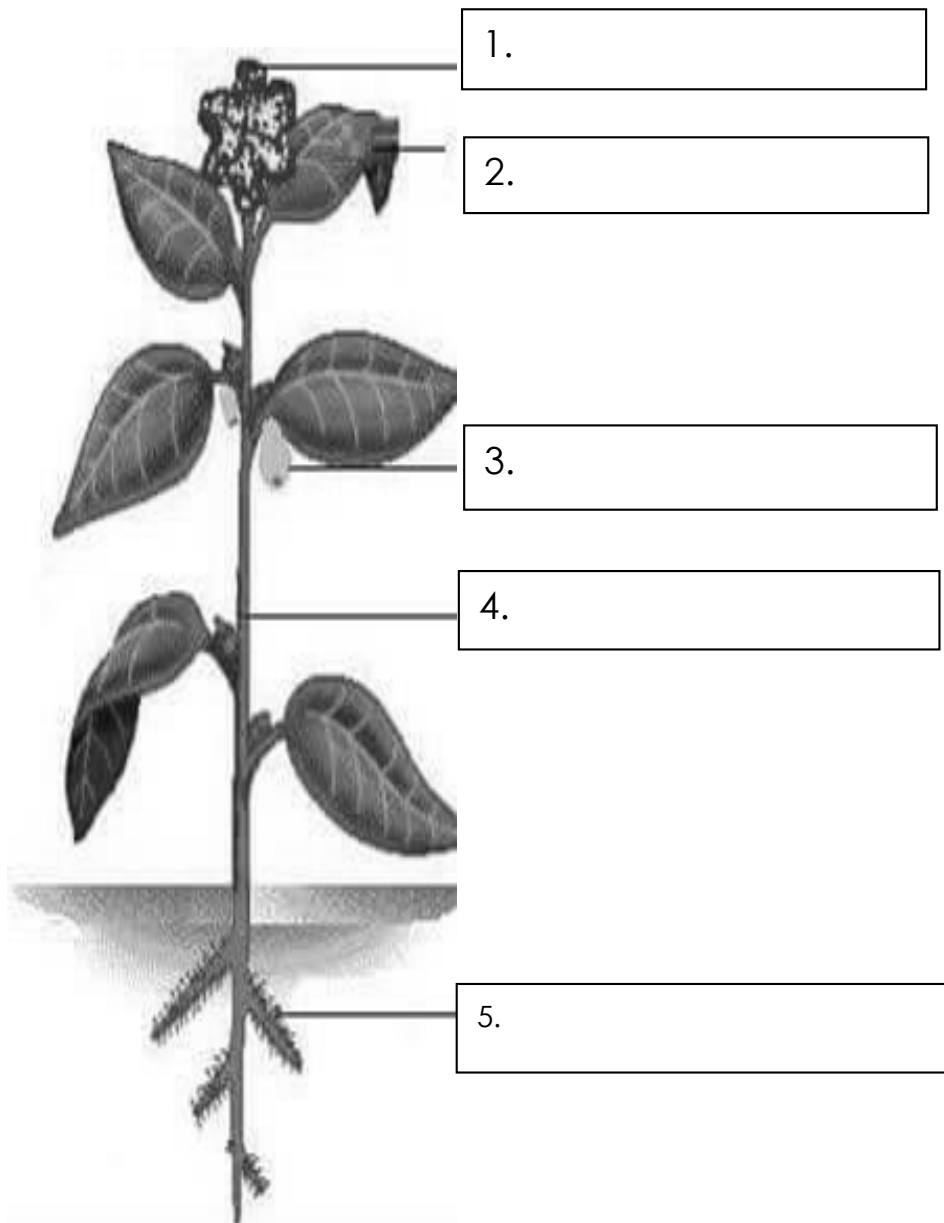
- I. Direction: Find the words from the box in the puzzle and encircle them.

plants	fruit	stem
leaf	root	flower

f	r	u	i	t	h	j	k
l	p	l	a	n	t	s	z
o	j	e	r	u	i	t	x
w	w	a	d	g	f	e	c
e	k	f	r	u	i	m	v
r	o	o	t	q	r	b	b
o	z	l	t	o	o	r	n
t	i	o	p	a	s	d	m

## Activity 1. 2 Label the parts.

Direction: Identify the parts of the plant. Choose your answer from the box below and write it in the box provided.



root

stem

fruit

leaf

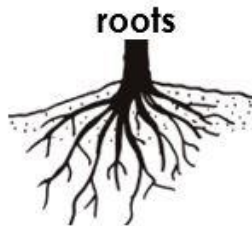
flower

### Activity 1.3 Match the part to its function.

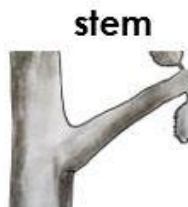
Direction: Match column A to Column B by connecting lines to your correct answer.

#### Column A

1.



2.



3.



4.



5.



#### Column B

**a.** grows under the soil. They hold the plant in place. They get water and minerals from the soil.

**b.** helps hold the plant up, it also carries water and minerals from the roots to the leaves.

**c.** a shoot of a higher plant that is specialized for reproduction and bears modified leaves (as petals).

**d.** a green, flat parts that grows from a stem or twig of a plant. It's function mainly in making food called photosynthesis.

**e.** is the ripened ovary of the flower. Some plants are fruit-bearing while others are not. Fruits differ in size, shape, color and number of seeds.



## *What I Have Learned*

Write **TRUE** if the statement about the function is correct and write **FALSE** if it is not. Write your answer on the blank.

- \_\_\_\_\_ 1. Root is the product of fertilization in a plant.
- \_\_\_\_\_ 2. Leaves make food for the plants through photosynthesis.
- \_\_\_\_\_ 3. Stem is the part of the plant that helps hold the plant up and also carries water and minerals.
- \_\_\_\_\_ 4. The roots of plants get water and minerals from the soil.
- \_\_\_\_\_ 5. Fruit is the ripened ovary of the flower.



## *What I Can Do*

A. Direction: Know the picture and unscramble the letters to form the correct words. Write each letter of your answer in the box provided.

1. m e t s

-



2. o r o t s

-



3. w e r f l o

-



4. t i u r f

-




5. l e f a

-




## Activity 1.2

Direction: Underline the correct answer that corresponds to its function. Choose your answer inside the parenthesis.

1. The (stem, root, leaf)  is the plant part that grows downward into the ground, but it can also be found below the ground, or both. They hold the plant in place. They get water and minerals from the soil.

2. The (root, leaf, stem)  holds the plant up. It also carries water and minerals from the roots to the leaves.

3. The (fruit, leaf, flower)  is a green flat part that grows from the stem or twig. It's function mainly in making food called photosynthesis.

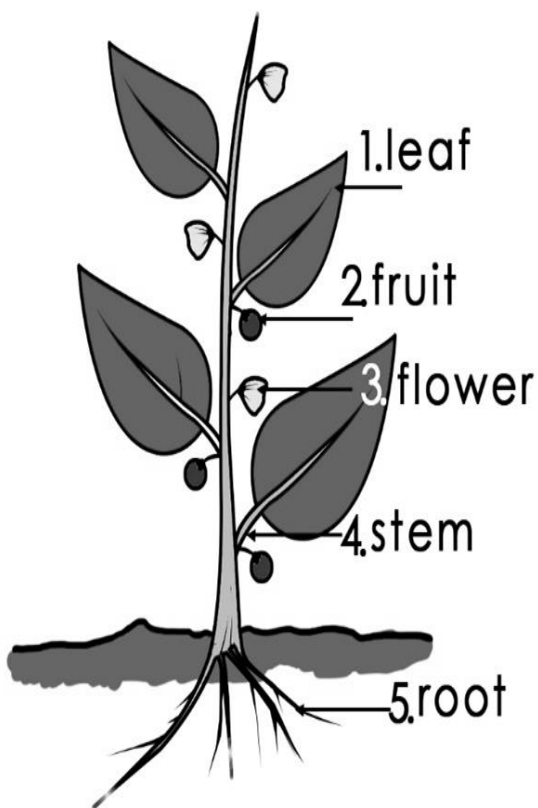
4. The (fruit, leaf, root)  is the product of fertilization of a plant. It is the ripened ovary of the flower. Some plants are fruit-bearing while others are not. Fruits differ in size, shape, color and number.

5. The (leaf, fruit, flower)  is a shoot of a higher plant that is specialized for reproduction and bears modified leaves (as petals).



## Assessment

Direction: Draw a line that connects from parts to its function.



a. a shoot of a higher plant that is specialized for reproduction and bears modified leaves (as petals).

b. a green, flat part that grows from a stem or twig of a plant. Its function mainly is making food called photosynthesis.

c. grow under the soil. They hold the plant in place. They get water and minerals from the soil.

d. helps hold the plant up. It also carries water and minerals from the roots to the leaves.

e. is the ripened ovary of the flower. Some plants are fruit-bearing while others are not.



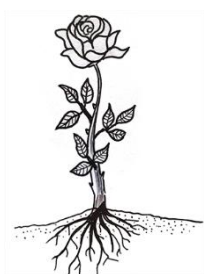


## Additional Activities

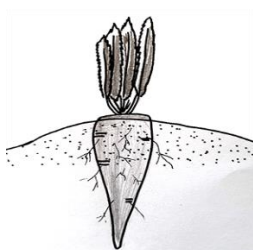
### Check me!

Direction: Answer the table below by putting a check in each column if the listed plant has the corresponding part.

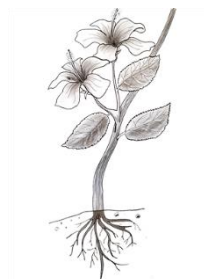
Name of Plant	root	Stem	leaf	flower	Fruit
Example: Mayana	√	√	√		
1. rose					
2. carrot					
3. gumamela					
4. narra					
5. rice					



1. rose



2. carrots



3. gumamela



4. narra



5. rice



## Answer Key

<p>What I Have Learned</p> <ol style="list-style-type: none"><li>1. false</li><li>2. true</li><li>3. true</li><li>4. true</li><li>5. true</li></ol>	<p>What's New</p> <ol style="list-style-type: none"><li>1. seeds</li><li>2. leaf</li><li>3. roots</li></ol>	<p>What I Know</p> <ol style="list-style-type: none"><li>1. d</li><li>2. c</li><li>3. a</li><li>4. b</li><li>5. a</li></ol>
<p>Assessment</p> <ol style="list-style-type: none"><li>1. b</li><li>2. e</li><li>3. a</li><li>4. d</li><li>5. c</li></ol>	<p>What I Can Do</p> <p>Activity 1.1</p> <ol style="list-style-type: none"><li>1. stem</li><li>2. roots</li><li>3. flower</li><li>4. fruit</li><li>5. leaf</li></ol> <p>Activity 1.2</p> <ol style="list-style-type: none"><li>1. root</li><li>2. stem</li><li>3. leaf</li><li>4. fruit</li><li>5. leaf</li></ol>	<p>What's More</p> <p>Activity 1.3</p> <ol style="list-style-type: none"><li>1. a</li><li>2. b</li><li>3. d</li><li>4. c</li><li>5. e</li></ol>

What's more

Activity 1.1

	t	i	o	p	a	s	D	
n	o	z	l	t	o	r	n	
b	r	o	t	q	r	B	b	
v	e	k	f	r	u	i	m	
c	w	w	a	d	g	f	E	
x	o	j	e	r	u	i	t	
z	i	p	l	a	n	t	S	
k	f	r	u	i	t	h	J	

Activity 1.2

A diagram of a plant with five labels pointing to different parts: 1. flower (pointing to the base of the stem), 2. leaf (pointing to one of the leaves), 3. fruit (pointing to a small fruit on the stem), 4. stem (pointing to the main vertical part of the plant), and 5. roots (pointing to the roots underground).

Name of Plant	root	Stem	leaf	flower	Fruit
Example: Mayana	✓	✓	✓		
1. rose	✓	✓	✓	✓	
2. carrot	✓	✓	✓	✓	
3. gumamela	✓	✓	✓	✓	
4. narra	✓	✓	✓	✓	
5. rice	✓	✓	✓	✓	✓

Additional Activities

## *References*

<https://www.google.com/search?q=parts+of+the+plants+without+label&tbm>

Carmelita C. Coronel and Norma M. Abracia, Ed.D, SEMP, Science and Health Textbook for Grade 3, ISBN 971-07-1809-6

**For inquiries or feedback, please write or call:**

Department of Education - Bureau of Learning Resources (DepEd-BLR)

Ground Floor, Bonifacio Bldg., DepEd Complex  
Meralco Avenue, Pasig City, Philippines 1600

Telefax: (632) 8634-1072; 8634-1054; 8631-4985

Email Address: [blr.lrqaad@deped.gov.ph](mailto:blr.lrqaad@deped.gov.ph) \* [blr.lrp@deped.gov.ph](mailto:blr.lrp@deped.gov.ph)